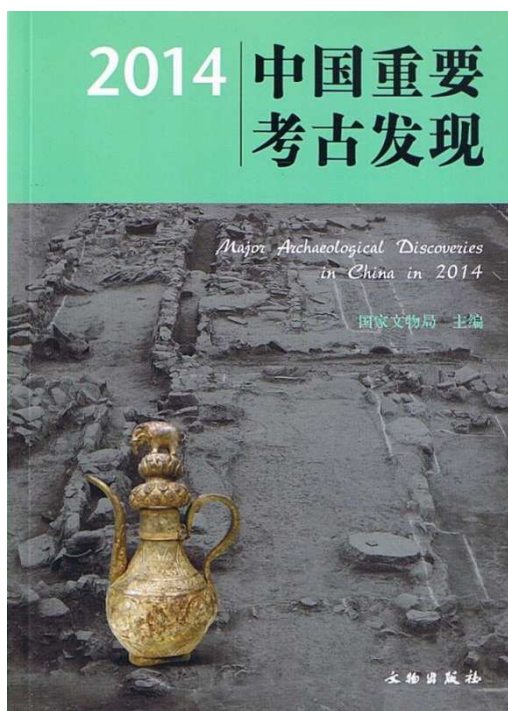


2014 中国重要考古发现



書籍番号 73800
国家文物局主編
2015年4月 B5 165頁
文物出版社 ¥4,400(本体)
ISBN 978-7-5010-4241-8
発売 株式会社 北九州中国書店
TEL/FAX 093-921-6570

【目録】



目 录 CONTENTS

- 前 言
Preface
- 2 广东郁南磨刀山旧石器时代遗址
Paleolithic Modao-Hill Site in Yunan, Guangdong
- 6 贵州平坝牛坡洞穴遗址
Pingba Niupodong Cave-site in Guizhou
- 10 浙江安吉安乐新石器时代遗址第三次发掘收获
Achievements in the Third Excavation on the Neolithic Anle Site in Anji
Zhejiang
- 15 福建三明南山新石器时代遗址
Neolithic Nanshan Site in Sanming, Fujian
- 20 海南陵水桥山新石器时代遗址
Neolithic Qiaoshan Site in Lingshui, Hainan
- 24 广西邕宁凌屋新石器时代贝丘遗址
Neolithic Lingwu Shell-mound Site in Yongning, Guangxi
- 28 云南宾川白羊村新石器时代遗址
Neolithic Baiyang-cun Site in Binchuan, Yunnan
- 32 青海民和喇家遗址2014年发掘收获
Achievements in the 2014-year Excavation on the Lajia Site in Minhe, Qinghai
- 36 江西九江莽麦岭遗址
Qiaomai-ling Site in Jiujiang, Jiangxi
- 41 河南郑州东赵遗址
Dongzhao Site in Zhengzhou, Henan
- 46 河南三门峡大唐火电厂战国秦汉墓地
Datang Thermal Power Plant Cemetery of the Qin-Han Period in Sanmenxia, Henan
- 51 云南祥云大波那墓地2014年发掘收获
2014-year Achievements in the Excavation of the Dabona Cemetery, Xiangyun, Yunnan
- 56 云南宁蒗干坝子青铜时代墓地
Bronze Age Ganbazi Cemetery in Ninglang, Yunnan
- 60 新疆和静巴仑台—伊尔根铁路沿线考古调查与发掘
Archaeological Survey and Excavation along the Balganatai-Ergen Railway in
Hejing, Xinjiang
- 64 天津蓟县小毛庄东汉列侯家族墓
Xiaomaozhuang Graveyard of an Eastern Han Period Marquis Family in Jixian
County, Tianjin
- 68 浙江上虞禁山早期越窑遗址
Early Yue-kiln Site at Mt. Jinshan in Shangyu, Zhejiang
- 72 洛阳孟津朱仓李密冢东汉墓园
Eastern Han Period Tomb-garden “Li Mi Tomb” near Zhucang in Mengjin, Luoyang
- 76 河南南阳百里奚路西汉墓
Western Han Period Tomb at Baili Xi Road in Nanyang, Henan
- 80 湖北随州周家寨小区墓地2014年发掘收获
Achievements in 2014-year excavation in the Zhoujiazhai Neighborhood Cemetery
in Suizhou, Hubei



- 84 四川广元昭化大坪子墓地
Dapingzi Cemetery at Zhaohua in Guangyuan, Sichuan
- 88 山西忻州九原岗北朝壁画墓
Northern Dynasties Period Jiuyuengang Mural Tomb in Xinzhou, Shanxi
- 92 山西晋阳古城一号建筑基址
No. 1 Building Foundation on the Ancient Jinyang City-site in Shanxi
- 96 内蒙古呼伦贝尔陈巴尔虎旗岗嘎墓地
Gangga Cemetery in Chen Barag Banner of Hulun Buir, Inner Mongolia
- 100 福建福州三坊七巷文儒坊西段遗址2014年发掘收获
Achievements in the 2014-year Excavation on the Western Wenru Block Site in the Three-block Seven-alley Quarter, Fuzhou, Fujian
- 104 江西景德镇湘湖地区早期窑业调查与试掘
Survey and Trial Excavation for Investigating Early Ceramic Industry in the Xianghu Area of Jingdezhen, Jiangxi
- 108 四川成都东华门遗址
Donghua Gate-site in Chengdu, Sichuan
- 112 陕西富平桑园窑址
Sangyuan Kiln-site in Fuping, Shaanxi
- 116 西安长安郭新庄唐韩休墓
Tang Period Han Xiu Tomb at Guoxin Zhuang in Chang'an, Xi'an
- 120 青海都兰热水哇沿水库遗址及墓葬2014年发掘收获
Achievements in the 2014-year Excavation of the Site and Tombs at the Wayan Reservoir in Reshui Township, Dulan, Qinghai
- 125 北京延庆大庄科矿冶遗址群
Dazhuangke Mining and Smelting Sites in Yanqing, Beijing
- 131 吉林安图宝马城金代祭祀遗址
Jin Period Baomacheng Sacrificial Site in Antu, Jilin
- 136 安徽繁昌窑遗址2014年发掘收获
Achievements in the 2014-year Excavation of Fanchang Kiln-sites in Anhui
- 140 安徽南陵铁拐宋墓
Song Period Tieguai Tombs in Nanling, Anhui
- 144 广东广州第一人民医院建设工地宋明城墙遗址
Song and Ming Periods City-wall Site on the Construction-site of the First Guangzhou People's Hospital, Guangdong
- 148 贵州遵义南宋播州土司杨价墓
Southern Song Period Bozhou Prefecture Chieftain Yang Jia Tomb in Zunyi, Guizhou
- 152 故宫明清建筑基址2014年发掘收获
Achievements in 2014-year Excavation of Ming-Qing Building-foundations in the Imperial Palace
- 158 山西新绛绛州州署遗址2014年发掘收获
Achievements in the 2014-year Excavation of the Jiangzhou Prefecture Magistrate's Office-site in Xinjiang, Shanxi
- 162 洛阳运河一号、二号清代沉船遗址与汉唐漕运水系调查
Qing Period Nos. 1 and 2 Wreck-sites in the Luoyang Section of the Great Canal and the Survey of Han and Tang Periods Canal Transport Water-routes